

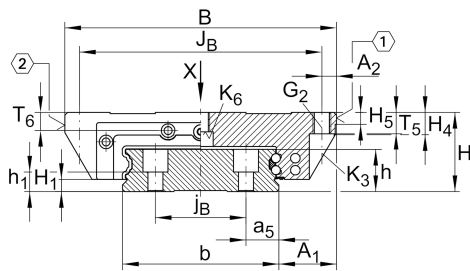


KWVE20-WL [↗](#)

循环球轴承滑块

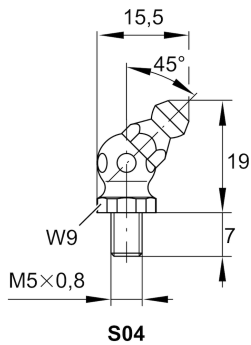
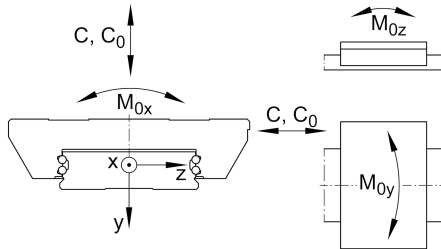
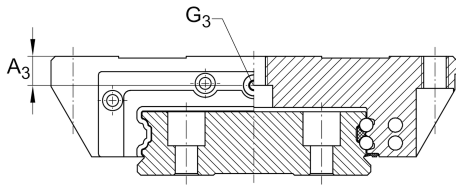
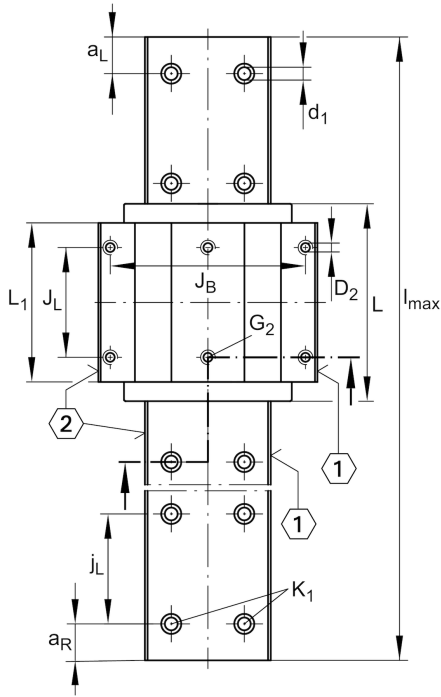
滑块 KWVE..-WL, 用于直线循环滚珠轴承和导轨组件的宽长型滑块

技术信息



主要尺寸和性能数据

H	27 mm	height system
B	80 mm	width carriage
L	87.3 mm	overall length carriage
C	16,200 N	dynamic load rating
C ₀	36,500 N	static load rating
M _{0x}	920 Nm	static moment rating about X axis
M _{0y}	400 Nm	static moment rating about Y axis
M _{0z}	400 Nm	static moment rating about Z axis
≈m	0.7 kg	重量



安装尺寸

A_1	19 mm	Distance from locating edge on carriage to locating edge on guideway
J_B	70 mm	
b	42 mm	width rail
A_2	5 mm	Distance from locating edge to hole
L_1	67.9 mm	
J_L	40 mm	
H_1	4.6 mm	Free space, system dimension
H_4	10.6 mm	
H_5	5 mm	
T_5	10 mm	Thread depth
T_6	6 mm	
G_2	M6	fixing screws above (DIN ISO 4762-12.9)
$G_2 M_A$	10 Nm	maximum tightening torque
K_3	M5	fixing screws below (DIN ISO 4762-12.9)
$K_3 M_A$	10 Nm	maximum tightening torque
K_6	M6	fixing screws below (DIN ISO 4762-12.9)
$K_6 M_A$	17 Nm	maximum tightening torque
D_2	5.5 mm	
A_3	5 mm	position lubrication connector
G_3	M6	lubrication connector
$t G_3$	5 mm	maximum permissible screw depth for lubrication connectors

附加信息

VMKB_065	KWVE	Material name
----------	------	---------------