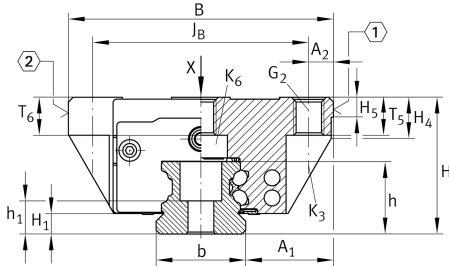


### KWVE20-B [↗](#)

循环球轴承滑块

### 技术信息



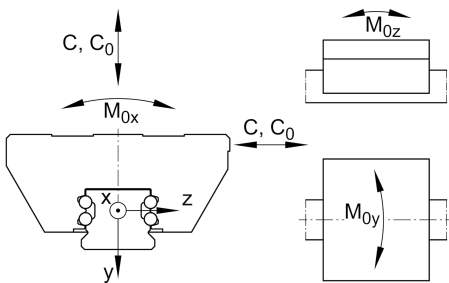
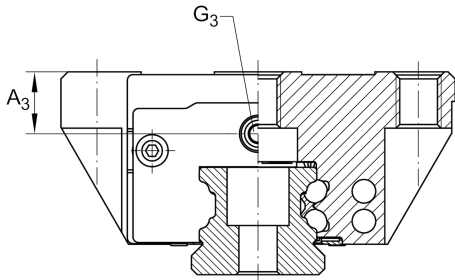
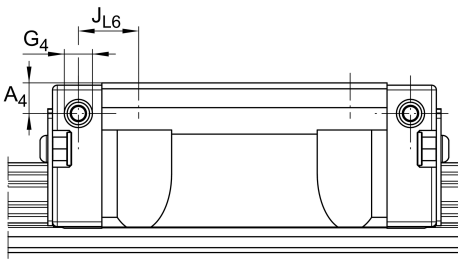
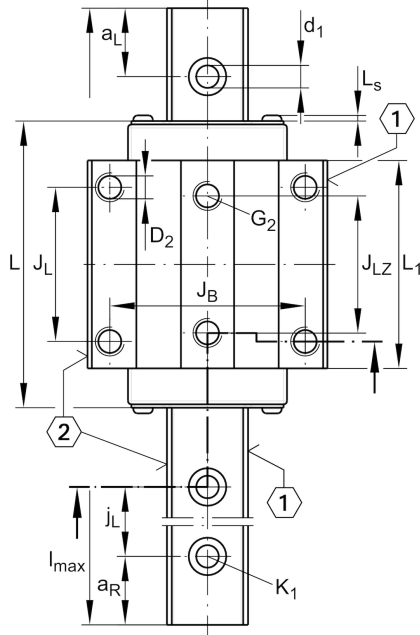
#### 主要尺寸和性能数据

|                 |          |                                   |
|-----------------|----------|-----------------------------------|
| H               | 30 mm    | height system                     |
| B               | 63 mm    | width carriage                    |
| L               | 71.4 mm  | overall length carriage           |
| C               | 13,100 N | dynamic load rating               |
| C <sub>0</sub>  | 27,000 N | static load rating                |
| M <sub>0x</sub> | 332 Nm   | static moment rating about X axis |
| M <sub>0y</sub> | 240 Nm   | static moment rating about Y axis |
| M <sub>0z</sub> | 240 Nm   | static moment rating about Z axis |
| ≈m              | 0.44 kg  | 重量                                |



安装尺寸

|           |         |  |
|-----------|---------|--|
| $A_1$     | 21.5 mm | Distance from locating edge on carriage to locating edge on guideway |
| $J_B$     | 53 mm   |  |
| $b$       | 20 mm   | width rail   |
| $A_2$     | 5 mm    | Distance from locating edge to hole                                  |
| $L_1$     | 50.4 mm |  |
| $L_S$     | 1.3 mm  |  |
| $J_L$     | 40 mm   |  |
| $J_{LZ}$  | 35 mm   |  |
| $H_1$     | 4.5 mm  | Free space, system dimension   |
| $H_4$     | 11 mm   |  |
| $H_5$     | 5.25 mm |  |
| $T_5$     | 10 mm   | Thread depth   |
| $T_6$     | 7.5 mm  |  |
| $G_2$     | M6      | fixing screws above (DIN ISO 4762-12.9)                              |
| $G_2 M_A$ | 10 Nm   | maximum tightening torque  |
| $K_3$     | M5      | fixing screws below (DIN ISO 4762-12.9)                              |
| $K_3 M_A$ | 10 Nm   | maximum tightening torque  |
| $K_6$     | M5      | fixing screws below (DIN ISO 4762-12.9)                              |
| $K_6 M_A$ | 10 Nm   | maximum tightening torque  |
| $D_2$     | 5.5 mm  |  |
| $A_3$     | 7.7 mm  | position lubrication connector                                       |
| $G_3$     | M5      | lubrication connector  |
| $t_{G_3}$ | 7 mm    | maximum permissible screw depth for lubrication connectors           |
| $A_4$     | 4.6 mm  | position lubrication connector                                       |
| $G_4$     | M5      | lubrication connector  |
| $t_{G_4}$ | 5.5 mm  | maximum permissible screw depth for lubrication connectors           |
| $J_{L6}$  | 9.4 mm  | position lubrication connector                                       |





附加信息

---

|          |      |               |
|----------|------|---------------|
| VMKB_065 | KWVE | Material name |
|----------|------|---------------|

